

# 語音辨認軟件建構元件

## Recognition Software Building Blocks

**CURSBB™** – the recognition software building blocks designed to enable non-expert parties to try and play with speech recognition technology. It allows users to build their own simple speech recognition systems and integrate speech capability into their products and services. CURSBB™ offers speech recognition capability using normal microphone as well as over the telephone. Useful tools are provided to enable rapid prototyping and application development for Chinese spoken language system in a cost effective way.

The CURSBB™ comprises of a collection of tools and application programming interfaces (API) on the Windows platform. Users can build their speech recognizers easily and test the resulting performance interactively. These tools are designed to be easy and simple for novice to the speech technology. By making use of the application programming interfaces (CUREC™), users may further integrate the speech recognizers they have tested into their products and services for practical deployment.

### CUTools™

- integrated tools for rapid prototyping of speech recognition components
- provide simple and user friendly interfaces
- enable interactive design and testing of speech recognizers
- lower non-expert parties' entry barrier to empower their products and services with speech interfaces

### VocabularyBuilder™

- tool for vocabulary selection during the speech recognizer design process
- simple graphical user interface (GUI) for easy vocabulary selection process
- Cantonese and Putonghua pronunciation lexicons are integrated to suggest candidate pronunciations for selected vocabulary items

### RecognizerBuilder™

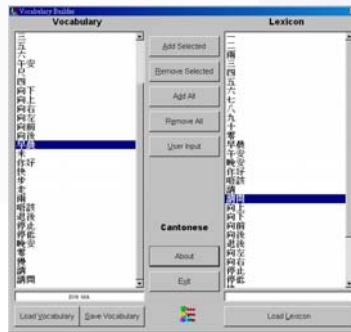
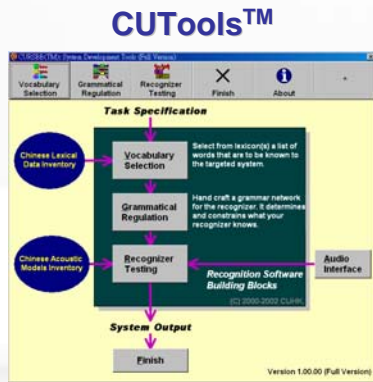
- tool for recognition grammar construction during the speech recognizer design process
- simple graphical user interface (GUI) for easy drag-and-drop grammar crafting process
- complicated tasks can be accomplished through a few point-and-click actions
- automatic generation of the final speech recognition grammar with a mouse click

### CUREC™

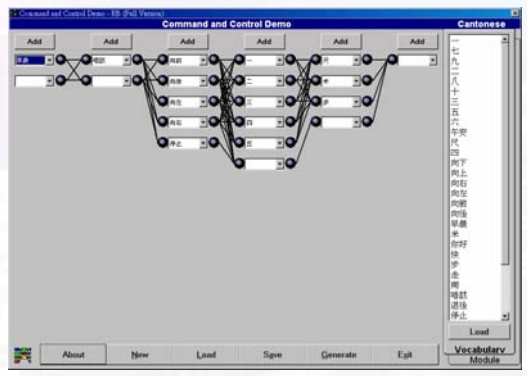
- application programming interfaces (API) implemented as dynamically linked library (DLL) running under Windows platform
- provides programming interfaces for developers to integrate speech technology into their products and services
- multi-thread safe design to offer greater scalability
- work over both microphone and telephone channels\*

\* For telephone channel, a Dialogic® computer telephony card and the required software system should have been installed properly. For microphone channel, a Sound Blaster sound card and the required Windows® software driver should have been installed properly.

# 語音辨認軟件建構元件 Recognition Software Building Blocks



**Recognizer Testing**



**Speech application development**



+  
**CURec™**

## LICENSING

The CURSBB™ is available for evaluation and commercialization. A nominal price of HK\$500.00 will be charged for the evaluation version. It is also available for commercialization. Please contact us for details.

## CONTACT

Interested parties are welcome to contact Department of Electronic Engineering<sup>1</sup> and Department of Systems Engineering and Engineering Management<sup>2</sup>, the Chinese University of Hong Kong, Hong Kong, for further information.

Attention: Prof. Tan LEE<sup>1</sup> or Prof. Helen MENG<sup>2</sup>

Address: Department of Electronic Engineering<sup>1</sup>/Department of Systems Engineering and Engineering Management<sup>2</sup>, the Chinese University of Hong Kong, Shatin, Hong Kong SAR, China

Fax: (852) 2603 5558<sup>1</sup> / (852) 2603 5505<sup>2</sup>

Email: tanlee@ee.cuhk.edu.hk or hmmeng@se.cuhk.edu.hk

Web page: <http://dsp.ee.cuhk.edu.hk/html/cursbb.html>